

Terminals, Lugs, and Fasteners

East Penn cast terminals are manufactured with 100% recycled lead. Lead is recognized as the premium choice in battery cable terminals because of its maximum current carrying ability, malleability, and corrosion resistance.



ALL EAST PENN MANUFACTURED
LEAD PRODUCTS ARE BUILT WITH
100% RECYCLED LEAD ALLOY.

- Terminals
- Fasteners
- Lugs
- Crimpable Terminals

**HEAVY-DUTY
TOP POST TERMINALS**

- Fits 6 to 1 gauge cables



Part #	Polarity	Packaging	Master Carton		MADE IN USA
			Quantity	Weight	
00350	Universal	Clam Shell of 1	24	7 lbs.	✓
00147	Universal	Clam Shell of 2	24	14 lbs.	✓
00369	Universal	Card of 10	10	27 lbs.	✓
06079	Universal	Unbranded Card of 10	10	27 lbs.	✓
05300	Universal	Bulk	100	27 lbs.	✓

**HEAVY-DUTY
TOP POST
EPOXY COATED
TERMINALS**

- Fits 6 to 1 gauge cables



Part #	Polarity	Packaging	Master Carton	
			Quantity	Weight
03067	1 Pos/1 Neg	Clam Shell of 2	10	7 lbs.
05305	Positive	Bulk - Red	50	14 lbs.
05306	Negative	Bulk - Black	50	14 lbs.

**HEAVY-DUTY
COMMERCIAL
TOP POST TERMINALS**

- Fits 2 to 4/0 gauge cables



Part #	Polarity	Packaging	Master Carton		MADE IN USA
			Quantity	Weight	
00366	Universal	Clam Shell of 1	10	6 lbs.	✓
00370	Universal	Card of 10	6	31 lbs.	✓
05301	Universal	Bulk	60	30 lbs.	✓

**HEAVY-DUTY
REPLACEMENT
SIDE TERMINAL**

- Fits 6 to 1 gauge cables



Part #	Polarity	Packaging	Master Carton		MADE IN USA
			Quantity	Weight	
00351 ²	Universal	Clam Shell of 1	24	7 lbs.	✓
00192 ²	Universal	Card of 8	10	21 lbs.	✓
06080 ²	Universal	Unbranded Card of 8	10	23 lbs.	✓
05302 ¹	Universal	Bulk	50	12 lbs.	✓
05303 ²	Universal	Bulk	50	14 lbs.	✓

¹Order 3/8" bolt separately Part No. 05304

²Comes with 3/8" bolt

**3-WAY TOP POST
TERMINAL**

- Fits 6 to 1 gauge cables



Part #	Polarity	Packaging	Master Carton		MADE IN USA
			Quantity	Weight	
05439	Positive	Bulk	25	11 lbs.	✓
05440	Negative	Bulk	25	11 lbs.	✓
05443	1 Pos/1 Neg	Bag of 2	20	17 lbs.	✓

**3-WAY TOP POST
COMMERCIAL
TERMINAL**

- Fits 2 to 4/0 gauge cables



Part #	Polarity	Packaging	Master Carton	
			Quantity	Weight
1512137	Negative	Bulk	25	18 lbs.
1512138	Positive	Bulk	25	18 lbs.

EPOXY-COATED WING NUT TERMINALS

- Clamp-type wing nut terminals convert standard post to marine or other special uses
- Brass plated wing nut
- Epoxy coating aids in polarity identification and corrosion resistance
- Positive terminal stud size is 3/8"
- Negative terminal stud size is 5/16"



Part #	Polarity	Packaging	Master Carton	
			Quantity	Weight
00148	1 Pos/1 Neg	Clam Shell of 2	10	8 lbs.
05310	Positive	Bulk - Red	50	20 lbs.
05311	Negative	Bulk - Black	50	20 lbs.

WING NUT TERMINALS

- Clamp type wing nut terminals convert standard post to marine or other special uses
- Brass plated wing nut
- Positive terminal stud size is 3/8"
- Negative and universal terminal stud size is 5/16"



05308

Lead Terminals

Part #	Polarity	Packaging	Master Carton		MADE IN USA
			Quantity	Weight	
00354	1 Pos/1 Neg	Clam Shell of 2	10	8 lbs.	✓
00149	Universal	Card of 10	10	36 lbs.	✓
05307	Universal	Bulk	50	18 lbs.	✓
05308	Positive	Bulk	50	18 lbs.	✓
05309	Negative	Bulk	50	18 lbs.	✓



00512



00639

Brass Terminals

Part #	Polarity	Packaging	Master Carton	
			Quantity	Weight
00512	Universal	Clam Shell of 1	10	2 lbs.
00639 ¹	1 Pos/1 Neg	Clam Shell of 2	10	8 lbs.

¹5/16" stud size

LEAD FREE QUICK CLAMP[®] TERMINAL

- Tin-plated brass terminal
- Stud size is 5/16"
- Lug hole size fits 5/16"
- Packaging includes four copper lugs, one positive & one negative quick clamp terminal
- All hardware is included (hex nut, washer, and knurled thumb nut)
- Allows easy, tool-free detachment from battery
- Patented design



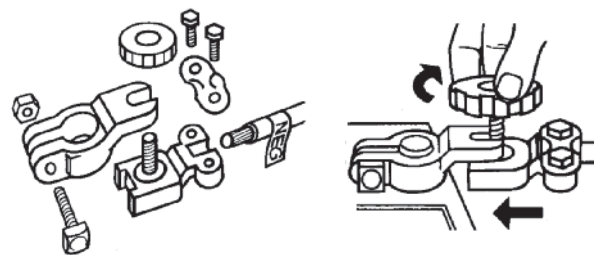
Part #	Polarity	Packaging	Master Carton	
			Quantity	Weight
08767	1 Pos/1 Neg	Clam Shell of 2	12	5 lbs.

LEAD QUICK DISCONNECT TERMINAL

- Designed for top post batteries. Fits both negative and positive posts
- For use in passenger cars, light-duty trucks, farm equipment, marine, RVs, and ATVs
- The cable easily detaches from the battery for anti-theft protection and to prevent electrical drain



Part #	Polarity	Packaging	Master Carton		MADE IN USA
			Quantity	Weight	
00191	Universal	Card of 1	6	4 lbs.	✓
05312	Universal	Bulk	10	6 lbs.	✓



GOLD PLATED BOLTS & TERMINALS

- Genuine 24K gold plated brass



Part #	Description	Packaging	Master Carton	
			Quantity	Weight
05444*	Top Post Terminal	Clam Shell of 1	25	5 lbs.
05445	Side Post Replacement Bolt	Clam Shell of 1	25	3 lbs.
05446**	Multi-Lead Top Post Terminal	Clam Shell of 1	25	6 lbs.

*Fits 6 to 1 gauge cables
 ** One 5/16" ring terminal and two 8 gauge auxiliary ports

SIDE TERMINAL ADAPTERS

- Converts post terminal battery for use with side terminal cables



Part #	Polarity	Packaging	Master Carton		MADE IN USA
			Quantity	Weight	
00353	1 Pos/1 Neg	Clam Shell of 2	10	9 lbs.	✓
05411	Positive	Bulk	25	11 lbs.	✓
05412	Negative	Bulk	25	11 lbs.	✓

LEAD FREE TERMINALS

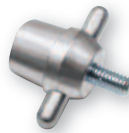
- Terminal made of tin-plated brass
- Stud size is 5/16"
- Comes with 2 lugs to fit 5/16" studs
- Allows straight or angled hook-up to cable
- Fits 4 and 6 gauge cable



Part #	Polarity	Packaging	Master Carton	
			Quantity	Weight
01056	Universal	Clam Shell of 1	10	2 lbs.
01057	Universal	Bulk	100	15 lbs.
05512	Universal	Card of 10	10	15 lbs.

POWER SPORTS CHARGING POSTS

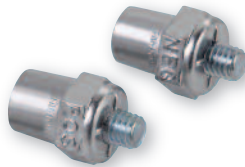
- Facilitate charging and testing of power sports batteries
- Posts have M6 threaded stud to screw into power sports battery terminals
- Easy finger tight installation



Part #	Polarity	Packaging	Master Carton		MADE IN USA
			Quantity	Weight	
05457	Universal	Clam Shell of 2	10	3 lbs.	✓
00385	Universal	Bag of 25	1	11 lbs.	✓

SIDE TERMINAL CHARGING POSTS

- Facilitate charging and testing of side terminal batteries
- Posts have 3/8" threaded stud to screw into side terminal batteries
- Not intended for side terminal to post conversion



Part #	Polarity	Packaging	Master Carton		MADE IN USA
			Quantity	Weight	
00352	1 Pos/1 Neg	Clam Shell of 2	10	4 lbs.	✓
05313	Positive	Bulk	25	5 lbs.	✓
05314	Negative	Bulk	25	5 lbs.	✓

CHARGING POSTS WITH EARS

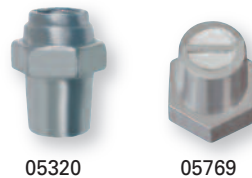
- Facilitate charging and testing of side terminal batteries
- Posts have 3/8" threaded stud to screw into side terminal batteries
- 01477 fits 3/8" stud
- Easy finger tight installation



Part #	Battery Type	Packaging	Master Carton		MADE IN USA
			Quantity	Weight	
00386	Side	Clam Shell of 2	10	3 lbs.	✓
05455	Side	Bag of 25	1	4 lbs.	✓
05456	Side	Bulk	100	15 lbs.	✓
01477	3/8" Stud	Bag of 6	4	8 lbs.	

GROUP 31 OR STUD STYLE CONVERSION POSTS

- Use to convert 3/8" stud type terminals to post type terminals



Part #	Polarity	Packaging	Master Carton		MADE IN USA
			Quantity	Weight	
00575	Universal	Clam Shell of 2	10	3 lbs.	✓
05320	Universal	Bulk	25	5 lbs.	✓
05768	Positive	Bulk	25	4 lbs.	
05769	Negative	Bulk	25	4 lbs.	



ORDNANCE BOLT TYPE TERMINAL

- Lead construction
- Long bolt allows for additional power connection

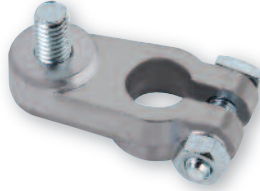


Part #	Polarity	Packaging	Master Carton		MADE IN USA
			Quantity	Weight	
05315	Positive	Bulk	25	13 lbs.	✓
05316	Negative	Bulk	25	13 lbs.	✓
05317	Universal	Bulk	25	13 lbs.	✓

POST TO THREADED CONNECTOR CONVERSION

3/8" Stud

- Change a post type battery to a 3/8" stud type battery
- Can be used with OE nut
- Wing nut or hex nut can be used if clearance is a problem



Part #	Polarity	Packaging	Master Carton		MADE IN USA
			Quantity	Weight	
05318	Universal	Bulk	25	11 lbs.	✓

UNIVERSAL SIDE TERMINAL CONVERSION POST

- Extends above the battery to convert side terminal battery to post terminal
- For use with post terminal battery cables or for group charging



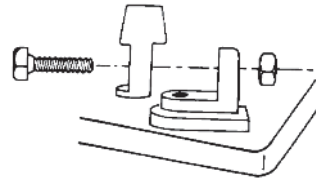
Part #	Polarity	Packaging	Master Carton		MADE IN USA
			Quantity	Weight	
05319	Universal	Bulk	25	8 lbs.	✓

FLAG TO POST TERMINAL ADAPTERS

- Designed to easily convert most U1 flag terminal batteries to post terminal applications where required



Part #	Packaging	Master Carton	
		Quantity	Weight
02033	Clam Shell of 2	10	4 lbs.
05321	Bulk	25	5 lbs.



BRASS BOLT EXTENDERS

- For adding direct to battery auxiliary connections



- 1-3/4" Short Side Bolt 00543
3/8-16 Thread
- 1-13/16" Long Side Bolt 00542
3/8-16 Thread
- 1-7/16" Top Post Terminal Bolt Extender 00541
5/16-18 Thread

Part #	Packaging	Master Carton		MADE IN USA
		Quantity	Weight	
1-3/4" Short Side Bolt				
00543	Clam Shell of 1	10	1 lb.	✓
05416	Bulk	10	1 lb.	✓
1-13/16" Long Side Bolt				
00542	Clam Shell of 1	10	5 lbs.	✓
05417	Bulk	10	4 lbs.	✓
1-7/16" Top Post Terminal Bolt Extender				
00541	Clam Shell of 1	10	5 lbs.	✓
05418	Bulk	10	4 lbs.	✓

LEAD SHIMS

- Rebuild battery post/cable clamp connections



Part #	Polarity	Packaging	Master Carton	
			Quantity	Weight
06300	Universal	Box of 25	1	1 lb.
07753	Universal	Clam Shell of 2	10	1 lb.



GARDEN TRACTOR NUT AND BOLT

- Zinc-plated
- Fits group U1 batteries



Part #	Packaging	Master Carton	
		Quantity	Weight
00193	Clam Shell of 2	10	1 lb.

BATTERY BOLT WITH SHOULDER NUT

- Zinc-plated
- 5/16"-18 x 1-1/4" bolt
- 5/16"-18 hex nut



Part #	Packaging	Master Carton	
		Quantity	Weight
00324	Clam Shell of 2	10	1 lb.
05322	Bag of 50	1	2 lbs.

GROUP 31 NUTS

- Closed top has 3/8"-16 UNC thread and 9/16" hex head
- Open top has 9/16" hex head



Closed Top



Open Top

Part #	Style	Packaging	Master Carton		MADE IN USA
			Quantity	Weight	
00574 ¹	Closed	Clam Shell of 1	10	1 lb.	✓
05419 ¹	Closed	Bag of 25	25	2 lbs.	✓
05415 ²	Open	Bag of 25	1 Bag	2 lbs.	✓

¹ stainless steel sintered metal
² stainless steel

REPLACEMENT SIDE TERMINAL BOLT

- 3/8"-16 UNC thread
- For use with East Penn replacement side terminals



Part #	Packaging	Master Carton	
		Quantity	Weight
05304	Bag of 50	1	2 lbs.

OE REPLACEMENT SIDE TERMINAL BOLTS

- 3/8"-16 UNC thread
- Use long bolt and/or spacer for dual cable hook-up
- Bolt head 5/16"



Part #	Packaging	Master Carton	
		Quantity	Weight
Short Side Terminal Bolt			
00325	Clam Shell of 2	10	1 lb.
05323	Bag of 50	1	3 lbs.
Long Side Terminal Bolt			
00863 ¹	Clam Shell of 1	10	1 lb.
05324 ¹	Bag of 25	1	2 lbs.
08766 ²	Clam Shell of 2	10	4 lbs.
Spacer			
05442 ³	Bulk Spacer	25	2 lbs.

¹Length 1.685"
²Includes lead spacer
³Spacer only

MARINE HEX NUTS

- Stainless steel
- 5/16-18 UNC hex nut



Part #	Packaging	Master Carton	
		Quantity	Weight
05519	Bag of 50	1	1 lb.

WING NUTS

- For threaded stud connections
- Stainless steel
- Contains one 3/8" wing nut and two-5/16" wing nuts



Part #	Packaging	Master Carton		MADE IN USA
		Quantity	Weight	
08779	Clam Shell of 3	10	1 lb.	✓



CRIMPABLE TERMINALS

STRAIGHT TERMINALS

- Tin-plated copper
- Bolt & shoulder nut included
- Resists corrosion
- Copper die casting
- Gauge and polarity stamped on terminal
- Thick wall for strong crimp



Part #	Gauge	Polarity	Packaging	Master Carton		MADE IN
				Quantity	Weight	USA
05359	4	Universal	Bulk	10	1 lb.	✓
05360	4	Positive	Bulk	10	1 lb.	✓
05361	4	Negative	Bulk	10	1 lb.	✓
05513	2	Positive	Bulk	10	2 lbs.	✓
05514	2	Negative	Bulk	10	2 lbs.	✓
05362	1	Positive	Bulk	10	2 lbs.	✓
05363	1	Negative	Bulk	10	2 lbs.	✓
05364	1/0	Positive	Bulk	10	2 lbs.	✓
05365	1/0	Negative	Bulk	10	2 lbs.	✓
05366	2/0	Positive	Bulk	10	2 lbs.	✓
05367	2/0	Negative	Bulk	10	2 lbs.	✓
05368	3/0	Positive	Bulk	10	2 lbs.	✓
05369	3/0	Negative	Bulk	10	2 lbs.	✓
05370	4/0	Positive	Bulk	8	2 lbs.	✓
05371	4/0	Negative	Bulk	8	2 lbs.	✓

LEFT ELBOW TERMINALS

- Tin-plated copper
- Bolt & shoulder nut included
- Resists corrosion
- Copper die casting
- Gauge and polarity stamped on terminal
- Thick wall for strong crimp



Part #	Gauge	Polarity	Packaging	Master Carton		MADE IN
				Quantity	Weight	USA
05388	1/0	Positive	Bulk	10	2 lbs.	✓
05389	1/0	Negative	Bulk	10	2 lbs.	✓
05390	2/0	Positive	Bulk	10	2 lbs.	✓
05391	2/0	Negative	Bulk	10	2 lbs.	✓
05392	3/0	Positive	Bulk	10	2 lbs.	✓
05393	3/0	Negative	Bulk	10	2 lbs.	✓
05394	4/0	Positive	Bulk	8	2 lbs.	✓
05395	4/0	Negative	Bulk	8	2 lbs.	✓

RIGHT ELBOW TERMINALS

- Tin-plated copper
- Bolt & shoulder nut included
- Resists corrosion
- Copper die casting
- Gauge and polarity stamped on terminal
- Thick wall for strong crimp



Part #	Gauge	Polarity	Packaging	Master Carton		MADE IN
				Quantity	Weight	USA
05380	1/0	Positive	Bulk	10	2 lbs.	✓
05381	1/0	Negative	Bulk	10	2 lbs.	✓
05382	2/0	Positive	Bulk	10	2 lbs.	✓
05383	2/0	Negative	Bulk	10	2 lbs.	✓
05384	3/0	Positive	Bulk	10	2 lbs.	✓
05385	3/0	Negative	Bulk	10	2 lbs.	✓
05386	4/0	Positive	Bulk	8	2 lbs.	✓
05387	4/0	Negative	Bulk	8	2 lbs.	✓

FLAG TERMINALS

- Tin-plated copper
- Bolt & shoulder nut included
- Resists corrosion
- Copper die casting
- Gauge and polarity stamped on terminal
- Thick wall for strong crimp



Part #	Gauge	Polarity	Packaging	Master Carton		MADE IN
				Quantity	Weight	USA
05372	1/0	Positive	Bulk	8	2 lbs.	✓
05373	1/0	Negative	Bulk	8	2 lbs.	✓
05374	2/0	Positive	Bulk	8	3 lbs.	✓
05375	2/0	Negative	Bulk	8	3 lbs.	✓
05376	3/0	Positive	Bulk	8	3 lbs.	✓
05377	3/0	Negative	Bulk	8	3 lbs.	✓
05378	4/0	Positive	Bulk	8	3 lbs.	✓
05379	4/0	Negative	Bulk	8	3 lbs.	✓



3/8" STUD TERMINALS

- Tin-plated copper
- Resists corrosion
- Copper die casting
- Thick wall for strong crimp



05396

05397

Part #	Gauge	Style	Packaging	Master Carton		MADE IN USA
				Quantity	Weight	
05396	2/0	Single	Bulk	10	1 lb.	✓
05397	2/0	Dual	Bulk	10	2 lbs.	✓

SIDE TERMINAL

- Tin-plated copper
- Crimp or solder to cable



Part #	Gauge	Polarity	Packaging	Master Carton		MADE IN USA
				Quantity	Weight	
05475	4	Universal	Bulk	10	1 lb.	✓
05476	2	Universal	Bulk	10	1 lb.	✓

LOCKING ANTI-ROTATING STACKABLE LUGS

- Tin-plated copper
- Gauges identified on lugs
- 3/8" hole size



05495

05496

Part #	Gauge	Packaging	Master Carton		MADE IN USA
			Quantity	Weight	
05495	1/0	Bulk	10	1 lb.	✓
05496	2/0	Bulk	10	1 lb.	✓
05497	3/0	Bulk	10	1 lb.	✓

SPLICES

- Tin-plated copper
- Copper die casting
- Thick wall for strong crimp



Part #	Gauge	Packaging	Master Carton		MADE IN USA
			Quantity	Weight	
05354 ¹	4	Bulk	10	1 lb.	✓
05355 ¹	1-2	Bulk	10	2 lbs.	✓
05356 ¹	1/0	Bulk	10	3 lbs.	✓
05357 ¹	2/0	Bulk	10	3 lbs.	✓
05358 ¹	3/0	Bulk	10	3 lbs.	✓
05398	1/0	Bulk	10	1 lb.	✓
05399	2/0	Bulk	10	1 lb.	✓
05400	3/0	Bulk	10	1 lb.	✓
05401	4/0	Bulk	10	1 lb.	✓

¹ Extra thick wall for greater strength and conductivity



COPPER LUGS

- Lugs can be crimped or soldered and are stackable
- Gauge stamped on lug for easy identification
- Flared ends for easy entry • UL Listed



Packaged



00685



00539

Part #	Gauge	Stud Hole	Packaging	Master Carton		MADE IN USA
				Quantity	Weight	
00548	6	1/4"	Clam Shell of 2	10	1 lb.	✓
00549	6	5/16"	Clam Shell of 2	10	1 lb.	✓
00685	4	3/8"	Clam Shell of 2	10	1 lb.	✓
00547	4	5/16"	Clam Shell of 2	10	1 lb.	✓
00546	2	5/16"	Clam Shell of 2	10	1 lb.	✓
00544	2	3/8"	Clam Shell of 2	10	1 lb.	✓
00545	2	1/2"	Clam Shell of 2	10	1 lb.	✓
00539 ^{1,2}	2/0	3/8"	Clam Shell of 2	10	1 lb.	✓
00540 ^{1,2}	2/0	1/2"	Clam Shell of 2	10	1 lb.	✓

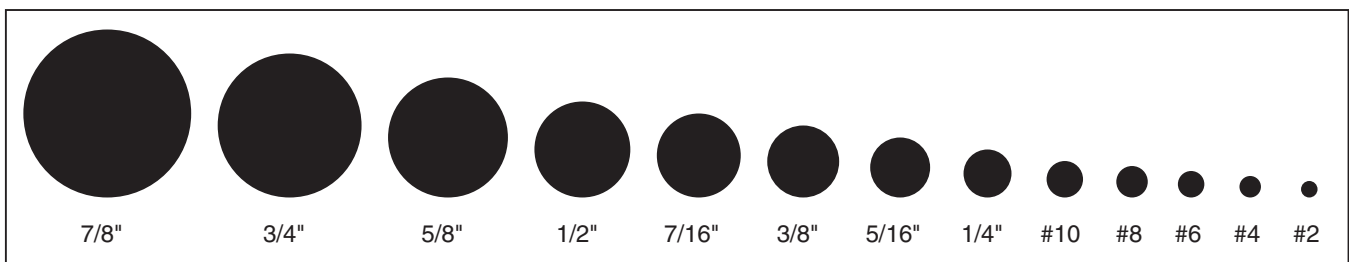
¹ Tin-plated
² non UL-listed

Bulk



Part #	Gauge	Stud Hole	Packaging	Master Carton		MADE IN USA
				Quantity	Weight	
05470	8	#10	Bulk	50	1 lb.	✓
05472	8	1/4"	Bulk	50	1 lb.	✓
05474	8	5/16"	Bulk	50	1 lb.	✓
05473	8	3/8"	Bulk	50	1 lb.	✓
05471	8	1/2"	Bulk	50	1 lb.	✓
05466	6	#10	Bulk	50	1 lb.	✓
05467	6	1/4"	Bulk	50	1 lb.	✓
05468	6	5/16"	Bulk	50	1 lb.	✓
05326	6	3/8"	Bulk	50	1 lb.	✓
05469	6	1/2"	Bulk	50	1 lb.	✓
05465	4	1/4"	Bulk	50	1 lb.	✓
05328	4	5/16"	Bulk	50	1 lb.	✓
05327	4	3/8"	Bulk	50	1 lb.	✓
05464	4	1/2"	Bulk	50	1 lb.	✓
05461	2	1/4"	Bulk	50	1 lb.	✓
05462	2	5/16"	Bulk	50	1 lb.	✓
05329	2	3/8"	Bulk	50	1 lb.	✓
05330	2	1/2"	Bulk	50	1 lb.	✓
05458	1	1/4"	Bulk	50	2 lbs.	✓
05459	1	5/16"	Bulk	50	2 lbs.	✓
05331	1	3/8"	Bulk	50	2 lbs.	✓
05332	1	1/2"	Bulk	50	2 lbs.	✓
05506	1/0	1/4"	Bulk	50	2 lbs.	✓
05460	1/0	5/16"	Bulk	50	2 lbs.	✓
05333	1/0	3/8"	Bulk	50	2 lbs.	✓
05334	1/0	1/2"	Bulk	50	2 lbs.	✓
05507	2/0	1/4"	Bulk	50	3 lbs.	✓
05463	2/0	5/16"	Bulk	50	3 lbs.	✓
05335	2/0	3/8"	Bulk	50	3 lbs.	✓
05336	2/0	1/2"	Bulk	50	3 lbs.	✓
05337	3/0	3/8"	Bulk	50	3 lbs.	✓
05338	3/0	1/2"	Bulk	50	3 lbs.	✓
05339	4/0	3/8"	Bulk	50	4 lbs.	✓
05340	4/0	1/2"	Bulk	50	4 lbs.	✓

Standard Stud Size



**EXTRA HEAVY DUTY
COPPER LUGS**

- Thicker walls for greater strength and conductivity
- Used for severe-duty applications
- Gauge stamped on lug for easy identification
- Lugs can be crimped or soldered and are stackable
- Tin-plated copper



Part #	Gauge	Stud Hole	Packaging	Master Carton		MADE IN USA
				Quantity	Weight	
05492	8	1/4"	Bulk	10	1 lb.	✓
05494	8	5/16"	Bulk	10	1 lb.	✓
05493	8	3/8"	Bulk	10	1 lb.	✓
05489	6	1/4"	Bulk	10	1 lb.	✓
05491	6	5/16"	Bulk	10	1 lb.	✓
05490	6	3/8"	Bulk	10	1 lb.	✓
05341	4	1/4"	Bulk	10	1 lb.	✓
05486	4	5/16"	Bulk	10	1 lb.	✓
05342	4	3/8"	Bulk	10	1 lb.	✓
05485	4	1/2"	Bulk	10	1 lb.	✓
05479	1-2	1/4"	Bulk	10	1 lb.	✓
05480	1-2	5/16"	Bulk	10	1 lb.	✓
05343	1-2	3/8"	Bulk	10	1 lb.	✓
05344	1-2	1/2"	Bulk	10	1 lb.	✓
05477	1/0	1/4"	Bulk	10	1 lb.	✓
05478	1/0	5/16"	Bulk	10	1 lb.	✓
05345	1/0	3/8"	Bulk	10	1 lb.	✓
05346	1/0	1/2"	Bulk	10	1 lb.	✓
05481	2/0	1/4"	Bulk	10	1 lb.	✓
05482	2/0	5/16"	Bulk	10	1 lb.	✓
05347	2/0	3/8"	Bulk	10	1 lb.	✓
05349	2/0	1/2"	Bulk	10	1 lb.	✓
05483	3/0	1/4"	Bulk	10	1 lb.	✓
05484	3/0	5/16"	Bulk	10	1 lb.	✓
05350	3/0	3/8"	Bulk	10	1 lb.	✓
05351	3/0	1/2"	Bulk	10	1 lb.	✓
05487	4/0	1/4"	Bulk	10	1 lb.	✓
05488	4/0	5/16"	Bulk	10	1 lb.	✓
05352	4/0	3/8"	Bulk	10	1 lb.	✓
05353	4/0	1/2"	Bulk	10	1 lb.	✓

GOLF CAR TERMINAL LUG

- 5/16" lug hole size
- Tin-plated copper



Part #	Gauge	Packaging	Master Carton		MADE IN USA
			Quantity	Weight	
05505	6	Bag of 50	1	1 lb.	✓

SOLDER PELLETS

- Fast method for attaching battery lug to cable



Part #	Gauge	Packaging	Master Carton		MADE IN USA
			Quantity	Weight	
05498	4	Bag of 10	1	1 lb.	✓
05499	2	Bag of 10	1	1 lb.	✓
05500	1	Bag of 10	1	1 lb.	✓
05501	1/0	Bag of 10	1	1 lb.	✓
05502	2/0	Bag of 10	1	1 lb.	✓
05503	3/0	Bag of 10	1	1 lb.	✓
05504	4/0	Bag of 10	1	1 lb.	✓



RING TERMINALS



Part #	Gauge	Style	Stud/Tab Size	Insulation	Packaging	Master Carton		MADE IN USA
						Quantity	Weight	
05722	22-18	Ring	4-6	PVC	Bag of 100	1	1 lb.	✓
05720	22-18	Ring	6-8	PVC	Bag of 100	1	1 lb.	✓
05721	22-18	Ring	8-10	PVC	Bag of 100	1	1 lb.	✓
05700	16-14	Ring	4-6	PVC	Bag of 100	1	1 lb.	✓
05719	16-14	Ring	6-8	PVC	Bag of 100	1	1 lb.	✓
05701	16-14	Ring	10	PVC	Bag of 100	1	1 lb.	✓
05702	16-14	Ring	1/4"	PVC	Bag of 100	1	1 lb.	✓
05703	12-10	Ring	10	PVC	Bag of 100	1	1 lb.	✓
05704	12-10	Ring	1/4"	PVC	Bag of 100	1	1 lb.	✓
05705	12-10	Ring	3/8"	PVC	Bag of 100	1	1 lb.	✓



Part #	Gauge	Style	Stud/Tab Size	Insulation	Packaging	Master Carton		MADE IN USA
						Quantity	Weight	
05735	22-18	Ring	8	Heat Shrinkable Nylon	Bag of 25	1	1 lb.	✓
05736	22-18	Ring	10	Heat Shrinkable Nylon	Bag of 25	1	1 lb.	✓
05738	16-14	Ring	8	Heat Shrinkable Nylon	Bag of 25	1	1 lb.	✓
05739	16-14	Ring	10	Heat Shrinkable Nylon	Bag of 25	1	1 lb.	✓
05737	16-14	Ring	1/4"	Heat Shrinkable Nylon	Bag of 25	1	1 lb.	✓
05762	12-10	Ring	10	Heat Shrinkable Nylon	Bag of 25	1	1 lb.	✓
05740	12-10	Ring	1/4"	Heat Shrinkable Nylon	Bag of 25	1	1 lb.	✓
05741	12-10	Ring	3/8"	Heat Shrinkable Nylon	Bag of 25	1	1 lb.	✓

SPADE TERMINALS



Part #	Gauge	Style	Stud/Tab Size	Insulation	Packaging	Master Carton		MADE IN USA
						Quantity	Weight	
05706	16-14	Spade	8-10	PVC	Bag of 100	1	1 lb.	✓
05707	12-10	Spade	8-10	PVC	Bag of 100	1	1 lb.	✓

SNAP PLUG



Part #	Gauge	Style	Stud/Tab Size	Insulation	Packaging	Master Carton		MADE IN USA
						Quantity	Weight	
05729	16-14	Snap Plug Receptacle	—	PVC	Bag of 100	1	1 lb.	✓
05712	16-14	Snap Plug	—	PVC	Bag of 100	1	1 lb.	✓

MALE AND FEMALE DISCONNECTS



Part #	Gauge	Style	Stud/Tab Size	Insulation	Packaging	Master Carton		MADE IN USA
						Quantity	Weight	
05708	16-14	Male Disconnect	.25" x .032"	PVC	Bag of 100	1	1 lb.	✓
05709	16-14	Female Disconnect	.25" x .032"	PVC	Bag of 100	1	1 lb.	✓
05710	12-10	Male Disconnect	.25" x .032"	PVC	Bag of 100	1	1 lb.	✓
05711	12-10	Female Disconnect	.25" x .032"	PVC	Bag of 100	1	1 lb.	✓



FULLY INSULATED MALE AND FEMALE DISCONNECTS



Part #	Gauge	Style	Stud/Tab Size	Insulation	Packaging	Master Carton		MADE IN USA
						Quantity	Weight	
01895	22-18	Male Disconnect	.25" x .032"	PVC	Bag of 100	1	1 lb.	✓
01898	22-18	Female Disconnect	.25" x .032"	PVC	Bag of 100	1	1 lb.	✓
01896	16-14	Male Disconnect	.25" x .032"	PVC	Bag of 100	1	1 lb.	✓
01899	16-14	Female Disconnect	.25" x .032"	PVC	Bag of 100	1	1 lb.	✓
01897	12-10	Male Disconnect	.25" x .032"	PVC	Bag of 100	1	1 lb.	✓
01908	12-10	Female Disconnect	.25" x .032"	PVC	Bag of 100	1	1 lb.	✓

BUTT CONNECTORS



Part #	Gauge	Style	Stud/Tab Size	Insulation	Packaging	Master Carton		MADE IN USA
						Quantity	Weight	
05713	22-18	Butt Connector	—	PVC	Bag of 100	1	1 lb.	✓
05714	16-14	Butt Connector	—	PVC	Bag of 100	1	1 lb.	✓
05715	12-10	Butt Connector	—	PVC	Bag of 100	1	1 lb.	✓



Part #	Gauge	Style	Stud/Tab Size	Insulation	Packaging	Master Carton		MADE IN USA
						Quantity	Weight	
05730	22-18	Butt Connector	—	Nylon	Bag of 100	1	1 lb.	✓
05731	16-14	Butt Connector	—	Nylon	Bag of 100	1	1 lb.	✓
05732	12-10	Butt Connector	—	Nylon	Bag of 100	1	1 lb.	✓



Part #	Gauge	Style	Stud/Tab Size	Insulation	Packaging	Master Carton		MADE IN USA
						Quantity	Weight	
05743	22-18	Butt Connector	—	Heat Shrinkable Nylon	Bag of 25	1	1 lb.	✓
05744	16-14	Butt Connector	—	Heat Shrinkable Nylon	Bag of 25	1	1 lb.	✓
05745	12-10	Butt Connector	—	Heat Shrinkable Nylon	Bag of 25	1	1 lb.	✓

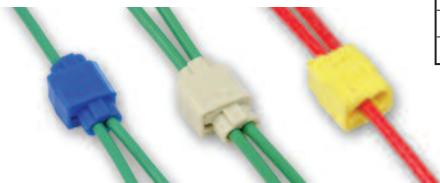
NON-INSULATED BUTT CONNECTORS



Part #	Gauge	Style	Stud/Tab Size	Insulation	Packaging	Master Carton		MADE IN USA
						Quantity	Weight	
05733	16-14	Butt Connector	—	Non-Insulated	Bag of 100	1	1 lb.	✓
05734	12-10	Butt Connector	—	Non-Insulated	Bag of 100	1	1 lb.	✓

QUICK SPLICE CONNECTORS

• No wire stripping required



05746

05747

05748

Part #	Gauge	Color	Packaging	Master Carton	
				Quantity	Weight
05746	18-14	Blue	Bag of 100	1	1 lb.
05747	18-14	White	Bag of 100	1	1 lb.
05748	12-10	Yellow	Bag of 100	1	1 lb.