

# FIRST CLASS

*for all classes*

DUAL-PURPOSE  
STARTING+CYCLING



*The industry's best approach for meeting  
the rigorous demands of commercial  
starting and auxiliary power.*

QUALITY SYSTEM  
CERTIFIED  
**ISO 9001**  
**ISO/TS 16949**  
ENVIRONMENTAL  
SYSTEM CERTIFIED  
**ISO 14001**





# AGM TECHNOLOGY

## Premium Starting / Cycle Service...



The trucks of the future are here today. These modern trucks need batteries that can match their sophisticated design and multiple electronic demands while still having plenty of good, old-fashioned cranking power.

Our advanced AGM batteries have the power and durability to handle anything from complex on-board electronics and plug-in devices to dozens of extra lights. They are also made to deliver the quick, high-powered discharge that will bring even the toughest engines to life.

In an industry where traditional starting batteries used to be the only choice, today's commercial trucks have a much more modern solution. Vibration-resistant, spillproof, maintenance-free, faster recharging, and longer cycle life are just some of the benefits from our AGM technology. From heavy-duty starting dump trucks to sleeper cabs with many accessory loads, these dual-purpose AGM batteries will work great for almost any commercial application.

**Up to 20x the vibration resistance  
and 2x the cycle life of flooded designs**

### FEATURES

- Popular group 31 size
- Completely maintenance-free
- Absorbed Glass Mat
- Minimum gassing
- Heavy-Duty Power-Perform™ plates

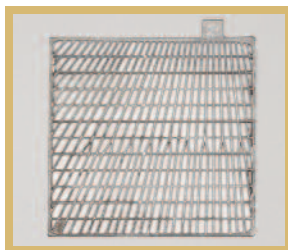
### BENEFITS

- Fits a vast majority of applications.
- Dramatically reduces maintenance costs. Eliminates over-watering and costly corrosion damage.
- No acid spills, even if tipped or broken. No corrosion damage. Significantly dampens vibration damage.
- Installs safely in driver's compartment or near sensitive electronic equipment.
- Optimized power, performance, and life.

### UNIQUE CONSTRUCTION FEATURES



Unique absorbed electrolyte won't spill or leak...even if tipped or cracked open.



Full-frame, positive and negative grids deliver maximum power without jagged wire edges to shorten life.

## GELLED ELECTROLYTE *Auxiliary Power...*



New heating and cooling systems for commercial trucks need a battery with tremendous deep cycle capabilities. HVAC and APU systems require plenty of power dedicated solely for their use. Our unique gelled electrolyte batteries are our deepest cycling battery withstanding multiple charging and recharging in order to provide the continual service demanded by these systems. These maintenance-free batteries are designed to deliver dependable performance cycle after cycle while providing longer battery life. Their spill-proof design and minimized gassing makes them safe to use in the driver's compartment or near sensitive electronic equipment. In addition, the gelled electrolyte withstands the added vibration of commercially used vehicles extending battery life.

# CALCIUM MAINTENANCE-FREE

## Heavy-Duty Starting...



Dump trucks, line-haul trucks, mixers, loggers, and other heavy-duty starting vehicles need a lot of Cold Cranking power. These rigs need to start time after time, for a long time... no matter what the circumstance.

That's why we designed the toughest, most reliable, and most powerful line of commercial starting flooded batteries to satisfy the most demanding commercial customer. Our commercial starting batteries deliver more cranking amps per pound, longer maintenance-free life, and considerably less hassle than other commercial designs.

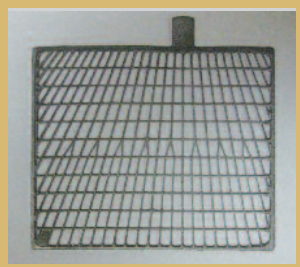
### FEATURES

- Calcium lead alloy
- Deep pocket envelope separators
- Demineralized electrolyte
- Computer-aided manufacturing
- Full-frame positive and negative grids
- Anchor lock elements

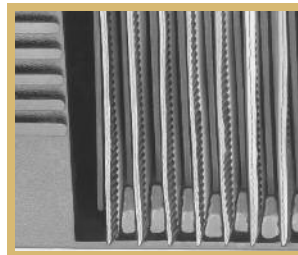
### BENEFITS

- Delivers more power-per-pound for longer, waterless operation and longer life.
- Protect the plates from shorts and extends battery life.
- Provides longer maintenance-free operation.
- Ensures highest consistency and quality.
- Direct all of the available cranking power to the terminals, where it's needed. This assures more cranking amps per pound of battery.
- The elements are actually glued to the bottom of the case, resisting the damaging effects of pounding vibration and extending battery life.

### UNIQUE CONSTRUCTION FEATURES



All the power is directed to the terminals using this full-frame, highly efficient grid design.



Gluing the plates to the bottom of the case extends life.



All four sides of the plate are protected in these deep pocket envelope separators.



Non-accessible flush covers are maintenance-free...allowing easy installation, replacement and cleaning.

# CALCIUM MAINTENANCE-FREE

## Starting / Cycle Service...



Today's sleeper cabs have more power-draining equipment than ever before. Pick up and delivery trucks and refrigerated units need an extra reserve of power to meet their daily needs as well as start their engines. Batteries designed primarily for starting cannot handle the multiple discharges and recharges that this type of auxiliary equipment requires. The thinner plates used in starting batteries will shed their active material and corrode under constant cycling service.

However, DEKA cycle service commercial batteries are specially designed to stand up under constant deep discharges and full recharges, cycle after cycle. They are also designed to provide plenty of cranking power to start larger commercial engines.

Every facet of our cycle service batteries have been made to endure this grueling service, while delivering the power needed for dependable starting day in and day out.

### FEATURES

Heavier, thicker plates

Specially formulated deep cycle oxide

Fiberglass wrapped plates

Exclusive demineralized electrolyte

### BENEFITS

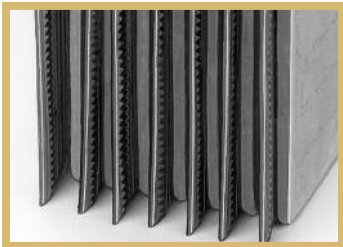
Will not buckle under multiple charge and discharge service. Resist corrosion. Provide more power and longer life.

Our exclusive oxide, or active material, formula is manufactured mixed and pasted onto the plates under total computer control. This means more power-per-pound of battery and longer, reliable life.

Specially designed separators not only insulate the positive plates from the negative plates to prevent short circuits, but also contain a fiberglass mat that is layered against the positive plate for longest life and trouble-free service.

Eliminates impurities and "trace" metals that can shorten battery life.

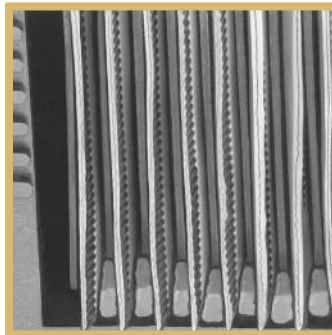
### UNIQUE CONSTRUCTION FEATURES



Heavier plates mean longer life.



Fiberglass strands imbed themselves into plate surface for reinforcement.



Plates are glued to the case to retard vibration damage.



# AGM TECHNOLOGY

## Premium Deep Cycle / Starting Power...



To meet the changing needs of large and small aftermarket battery users and OEMs, we designed an innovative AGM battery to deliver more deep cycle service for heavy-duty auxiliary power along with dependable starting power.

More than ever before, commercial trucks are utilizing HVAC and APU systems independent of the truck's main power source. Our deep cycle AGM batteries are made with plenty of power and a super durable internal construction to withstand the multiple charging and recharging service of these demanding battery powered systems.

For commercial vehicles maxed out with accessory loads or other large power draws, these AGM batteries are the industry's best starting and deep cycle solution. An advanced maintenance-free design delivers dependable performance cycle after cycle while providing longer battery life. A spillproof construction makes them safe to use in the driver's compartment or near sensitive electronic equipment. In addition, this reinforced AGM construction further extends battery life by withstanding the added vibration typical of commercially used vehicles.

**Up to 20x the vibration resistance  
and 2x the cycle life of flooded designs**

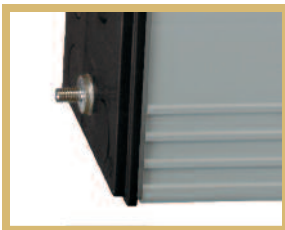
### FEATURES

- Popular group 31 size
- Heavy-Duty Power-Perform™ plates
- Completely maintenance-free
- Absorbed Glass Mat
- Minimum gassing

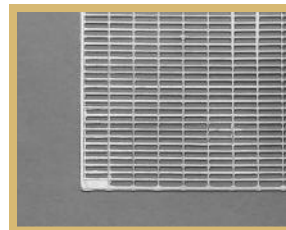
### BENEFITS

- Fits a vast majority of applications.
- Optimized power, performance, and life even under deep cycle service.
- Dramatically reduces maintenance costs. Eliminates over-watering and costly corrosion damage.
- No acid spills, even if tipped or broken. No corrosion damage. Significantly dampens vibration damage.
- Installs safely in driver's compartment or near sensitive electronic equipment.

### UNIQUE CONSTRUCTION FEATURES



Unique absorbed electrolyte won't spill or leak... even if tipped or cracked open.

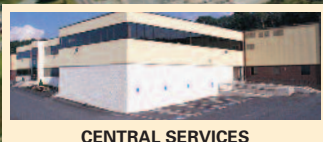


Thicker, full-frame positive and negative grids deliver maximum power under heavy deep cycle service.

### THE INDUSTRY'S BEST POWER SOLUTIONS

*Today's commercial trucks are not just work vehicles; they are equipped with many of the accessories found in a mobile home. What was once traditional air conditioning and heating units, are now being replaced with independently powered HVAC and APU systems. Old fashioned starting batteries simply cannot deliver all of the starting power required, and hold up under the continuous cycle power drains required by all the new auxiliary equipment.*

*East Penn has developed the ultimate flooded and AGM battery technology to deliver both starting and accessory power. In conjunction with a Low Voltage Disconnect, these Deka batteries provide the most powerful, reliable, versatile, and efficient power solutions in the commercial industry.*



CENTRAL SERVICES



AUTOMOTIVE BATTERY PLANT A-3

QUALITY SYSTEM  
CERTIFIED  
**ISO 9001**  
**ISO/TS 16949**  
ENVIRONMENTAL  
SYSTEM CERTIFIED  
**ISO 14001**



SMELTER AND REFINERY



DISTRIBUTION CENTER



SPECIALTY BATTERY PLANT S-1



KELLER TECHNICAL CENTER



CABLE AND WIRE PLANT



INDUSTRIAL BATTERY PLANT



INJECTION MOLDING /  
FLEET MAINTENANCE



CORYDON, IA BATTERY PLANT A-5

## World's Largest and Most Modern Single-Site Battery Manufacturing Facility

Since 1946, East Penn has been producing high quality batteries and battery accessories for the automotive, commercial, marine, industrial, stationary, and specialty markets. Facilities at its 520-acre manufacturing complex at Lyon Station, PA include four automotive battery plants, an industrial battery plant, a specialty battery plant, a state-of-the-art oxide facility, an innovative recycling infrastructure, and dozens of vertically integrated capabilities and other support facilities. An additional manufacturing facility in Corydon, IA helps accommodate widespread growth. East Penn owns and operates a wire, cable, and battery accessory plant and a multiple facility distribution center just miles away from its Lyon Station complex.

New high-tech facilities and computer monitoring and control systems have made the company an industry leader in advanced battery manufacturing.

East Penn's quality manufacturing is recognized worldwide and has met the global requirements of ISO 9001 and ISO/TS 16949 certification standards. East Penn is also a leader in innovative recycling and has met global environmental requirements of ISO 14001 certification standards.

Staffed with a long-term management team, East Penn is an independent company committed to the future and dedicated to producing high-class products and service to assure complete satisfaction, above and beyond the industry standard, to our partners and customers worldwide.

## **EAST PENN manufacturing co., inc.**

Lyon Station, PA 19536-0147 • Phone: 610-682-6361 • Fax: 610-682-4781

**Order Department Hotline: 610-682-4231**

[www.dekabatteries.com](http://www.dekabatteries.com)

*A<sup>3</sup>™ (Advanced-Cubed)*

*precision-focused  
manufacturing approach  
delivers an optimal balance  
of life, power, and durability.*

*Each function of the battery is thoroughly tested to ensure  
that every battery delivers optimized performance.*

