



*The most complete line of premium quality marine batteries in the industry*



**FLOODED • AGM • GEL**

## **MARINE MASTER.**

Marine Master batteries are renowned for their proven dependability and solid performance. This flooded battery line offers a complete array of starting, dual purpose, and deep cycle solutions for virtually any marine need. Even under challenging marine conditions like wave pounding vibration, stubborn engine starting, heavy house power, auxiliary, and trolling, Marine Master batteries rise to the top in user-friendly, marine-tough service, and extended reliability.

## **INTIMIDATOR.**

Intimidator AGM marine batteries go above and beyond conventional flooded designs providing an enhanced durability that powers more accessories longer. This premium spillproof, maintenance-free battery has pioneered a new era in user-convenience and safety while delivering the optimum combination of starting, cycling, and deep cycle power.

## **DOMINATOR.**

Dominator Gel marine batteries take deep cycle service to even deeper levels. An innovative gelled electrolyte technology protects the battery from ultra-deep discharges providing the trolling and heavy house power to handle even the most serious boating and fishing needs.

It's not always blue  
skies and flat water.

Be ready.

# MARINE MASTER®

**STARTING • DEEP CYCLE/STARTING • HEAVY-DUTY DEEP CYCLE**

## High Marine Cranking Power STARTING POWER

- High cranking power for quick engine starts
- Flush cover, easy-to-install
- Extra reserve capacity for emergencies
- Maintenance-free design



Boats get out in the water faster with the Marine Master quick cranking, high-powered line of starting batteries. Built with a durable maintenance-free design, these high amp batteries are made to maximize boating convenience with quality and power. Special design features ensure that this no-hassle premium performance continues start after start.



## The Best of Both Worlds DEEP CYCLE/STARTING

- High starting and deep cycle capability
- Longer cycling than starting battery
- Extra reserve power for accessory loads
- Rugged vibration resistant construction



In many instances, one type of power just isn't enough to meet the multiple demands of typical marine needs. Marine Master dual purpose batteries are the ideal compromise between high starting and moderate deep cycle service. Delivering more power-per-pound with reinforced components, they provide longer cycling service than starting batteries, which means more accessory power longer.



## A Deeper Look Into True Deep Cycle Service HEAVY-DUTY DEEP CYCLE

- More power for trolling and electronic accessories
- Built-in protection against deep discharge damage
- Rugged vibration resistant construction
- Reliable power for modest starting



Extended trolling and many accessory loads (such as depth finders, live wells, fish finders, stereos, and lights) are demanding power drains that can provide a great deal of wear and tear on a marine battery. Marine Master has a dependable line of true deep cycle batteries that have been especially made to withstand these demanding types of marine use. Instead of just focusing on one aspect of the battery's design to enhance deep cycle performance, these batteries incorporate multiple features that make it one tough unit. Marine Master deep cycle batteries also have starting power. If the battery's cold cranking ratings match the engine starting requirements, you can get dependable starting in addition to deep cycle performance.



# **INTIMIDATOR®** AGM Series for **MARINE** **STARTING / HEAVY-DUTY DEEP CYCLE**

- Over 2x the cycle life\* maximizes accessory and trolling power
- 20x more vibration resistant\* for wave-pounding protection
- Best all-purpose service provides starting, cycling, and deep cycle capability
- Safer install and transport with no-spill design to prevent leaking acid
- High freeze-resistance provides better all weather performance
- Better capacity protection during periods of infrequent use

*\*above and beyond conventional designs*



Ordinary marine batteries can be extremely intimidated by the power demands of today's boats. That's why more boat owners need the premium AGM power of the Intimidator line of batteries.

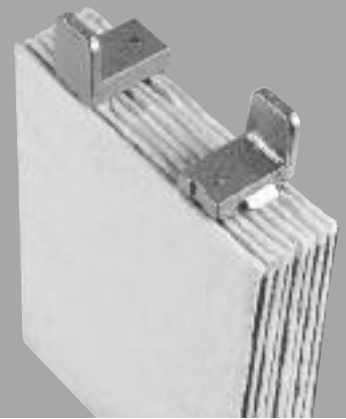
From starting performance to a boatload of trolling and accessory power, Intimidator batteries won't have any trouble in meeting marine needs. A premium spillproof design brings essential convenience and safety to the boating enthusiast.

**Intimidator Starting and Cycling Service** batteries deliver high starting and moderate deep cycle power. Ideal for boaters that want high cranking power and still enjoy dependable power for more electronic accessories.

**Intimidator Heavy-Duty Deep Cycle** batteries have more fish-finding trolling and accessory power. Ideal for heavy deep cycle demands with moderate starting power. Provides advanced protection against the typical deep discharge of extended trolling use.



**INTIMIDATOR**  
AGM Enhanced  
Electrolyte  
Suspension System



**ABSORBED GLASS MAT TECHNOLOGY**

**SHOCK-ABSORBING SEPARATORS** resist vibration and damage.

**ENHANCED DURABILITY DESIGNS** withstand wear of extended cycling service.

**SUPERIOR ELECTROLYTE RETENTION** prevents dry out and acid leaks.

**LOWER CURRENT RESISTANT SEPARATORS** improve current flow for faster starts.

